

Human Sonic Hedgehog (Shh) Protein

Cat. No. SHH-HE001

Description

Source	Recombinant Human Sonic Hedgehog (Shh) Protein is expressed from E.coli without tag. It contains Cys24-Gly197.
Accession	Q15465
Molecular Weight	The protein has a predicted MW of 19.79 kDa kDa. The protein migrates to 23-25 kDa based on Tris-Bis PAGE result.
Endotoxin	Less than 1EU per µg by the LAL method.
Purity	> 95% as determined by Tris-Bis PAGE > 95% as determined by HPLC

Formulation and Storage

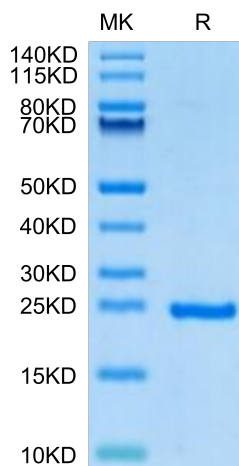
Formulation	Lyophilized from 0.22 µm filtered solution in PBS, 300mM NaCl (pH 7.4). Normally 8% trehalose / 8% mannitol is added as protectant before lyophilization.
Reconstitution	Centrifuge the tube before opening. Reconstituting to a concentration more than 100 µg/ml is recommended. Dissolve the lyophilized protein in distilled water.
Storage	-20 to -80°C for 12 months as supplied from date of receipt. -80°C for 3-6 months after reconstitution. 2-8°C for 2-7 days after reconstitution. Recommend to aliquot the protein into smaller quantities for optimal storage. Please minimize freeze-thaw cycles.

Background

Sonic hedgehog (Shh) is a secreted protein with important roles in mammalian embryogenesis. During tooth development, Shh is primarily expressed in the dental epithelium, from initiation to the root formation stages.

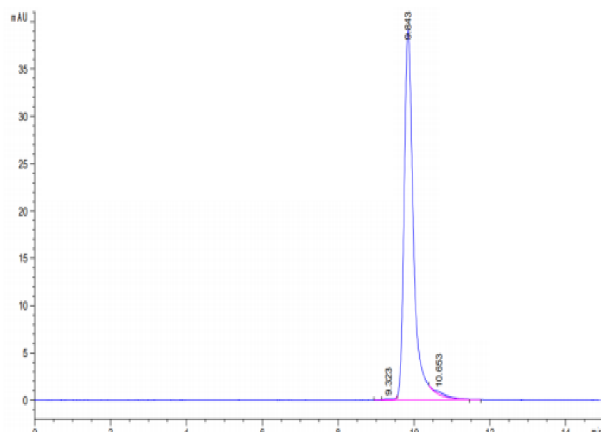
Assay Data

Tris-Bis PAGE



Human Sonic Hedgehog (Shh) on Tris-Bis PAGE under reduced condition. The purity is greater than 95%.

SEC-HPLC



The purity of Human Sonic Hedgehog (Shh) is greater than 95% as determined by SEC-HPLC.